

2528/105
2922/105
HUMAN ECOLOGY AND ECONOMICS
Oct./Nov. 2017
Time: 3 hours



THE KENYA NATIONAL EXAMINATIONS COUNCIL
DIPLOMA IN ENVIRONMENTAL SCIENCE AND TECHNOLOGY
MODULE I

HUMAN ECOLOGY AND ECONOMICS

3 hours

INSTRUCTIONS TO CANDIDATES

You should have the following for this examination:

Answer booklet;

Non-programmable scientific calculator.

This paper consists of TWO sections; A and B.

Answer ALL questions in section A and any THREE questions from section B in the answer booklet provided.

Each question in section A carries 4 marks while each question in section B carries 20 marks.

Maximum marks for each part of a question are as indicated.

Candidates should answer the questions in English.

This paper consists of 4 printed pages.

Candidates should check the question paper to ascertain that all the pages are printed as indicated and that no questions are missing.

SECTION A (60 marks)

Answer ALL questions in this section.

1. List **four** stages of Piaget's cognitive development. (4 marks)
2. Distinguish between natural will and rational will as used in human behaviour theory. (4 marks)
3. (a) Define the term stigma. (1 mark)
(b) Name **three** types of stigma associated with human beings. (3 marks)
4. Draw a labelled diagram of Maslow's hierarchy of needs. (4 marks)
5. State any **four** factors that may lead to an increase in supply of maize in Kenyan market. (4 marks)
6. State any **four** measures that a County government may take to attract investors to her County. (4 marks)
7. Explain any **four** disadvantages of delocalization of industries. (4 marks)
8. (a) Define 'elasticity of supply'. (2 marks)
(b) The change in price of cabbages in a market from Ksh. 50 to Ksh. 70 per kilogram caused an increase in the quantity supplied from 200 kg to 300 kg. Calculate the elasticity of supply. (2 marks)
9. Distinguish between internal economies of scale and external economies of scale. (4 marks)
10. Name the factor of production that relate to the resources listed in Table 1. (4 marks)

Table 1

Resources	Factor of production
Manager	
Vehicle	
Cotton	
Water	

SECTION B (60 marks)

Answer any **THREE** questions from this section.

11. (a) Explain **five** reasons why a government levies taxes on its citizens. (10 marks)
- (b) Figure 1 represents Trade cycle.

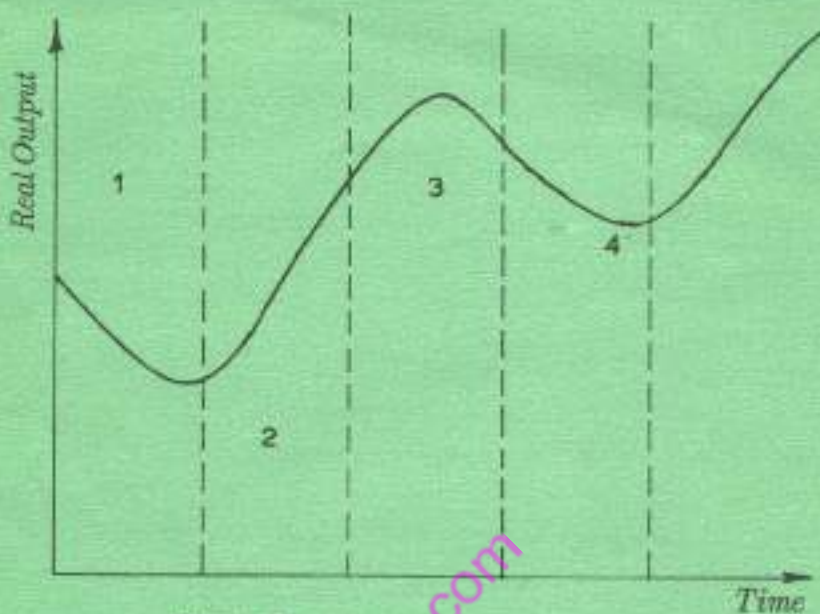


Fig.1: Trade cycle

- (i) Identify phases 1 to 4. (4 marks)
- (ii) Explain phases 1 and 2. (6 marks)

12. (a) Explain **four** strategies that governments use to raise the standard of living in a country. (8 marks)
- (b) Use the data shown in Table 2 to draw a demand curve. (6 marks)

Table 2

Price	Quantity demanded
5	200
10	15
15	11
20	8
25	5
30	3
35	2



- Politeness
1000 - 1000*
- (c) Explain **three** negative consequences of industrial production activities on the environment. (6 marks)
13. (a) Define 'social stratification'. (2 marks)
- (b) Explain the following dimensions of social stratification:
- (i) ascription; (4 marks)
- (ii) achieved status. (4 marks)
- (c) Explain **three** systems in psychoanalytic theory that enable mentally healthy individuals to carry out transactions efficiently. (10 marks)
14. (a) Define the following terms as used in social theory:
- (i) values; (2 marks)
- (ii) morals; (2 marks)
- (iii) ethics. (2 marks)
- Abuse
Governs
Politics*
- (b) Explain **five** characteristics of a social group. (10 marks)
- (c) Explain any **four** ways through which responsible parenthood is demonstrated in society. (4 marks)
15. (a) Define the term 'national income'. (2 marks)
- Rules
Gives* *for the law
based on a system*
- (b) Explain the following concepts used in measuring national income in Kenya.
- (i) Gross Domestic Product (GDP); (4 marks)
- (ii) Gross National Product (GNP); (4 marks)
- (iii) Per Capita income. (4 marks)
- (c) Explain **three** uses of national income statistics in Kenya. (6 marks)

THIS IS THE LAST PRINTED PAGE.